



Growing  
ideas  
through  
networks

**CONVERGES WG3; we are next!**

G. Urbanič<sup>1</sup> (lead), E. Polliti<sup>2</sup> (co-lead)


<sup>1</sup>High School in Ptuj  
<sup>2</sup>University of Trento

 **cost**  
EUROPEAN COOPERATION  
IN SCIENCE & TECHNOLOGY


 Funded by the Horizon 2020 Framework Programme  
of the European Union

 **CONVERGES**  
European Riparian Ecosystems

3-4 April 2019, Prague, Czech Republic




**Bridging the gap**




**Science** **Policy**  
**Management?**

FIGURE 3  
The science-policy chasm  
Godfrey et al. (2010)

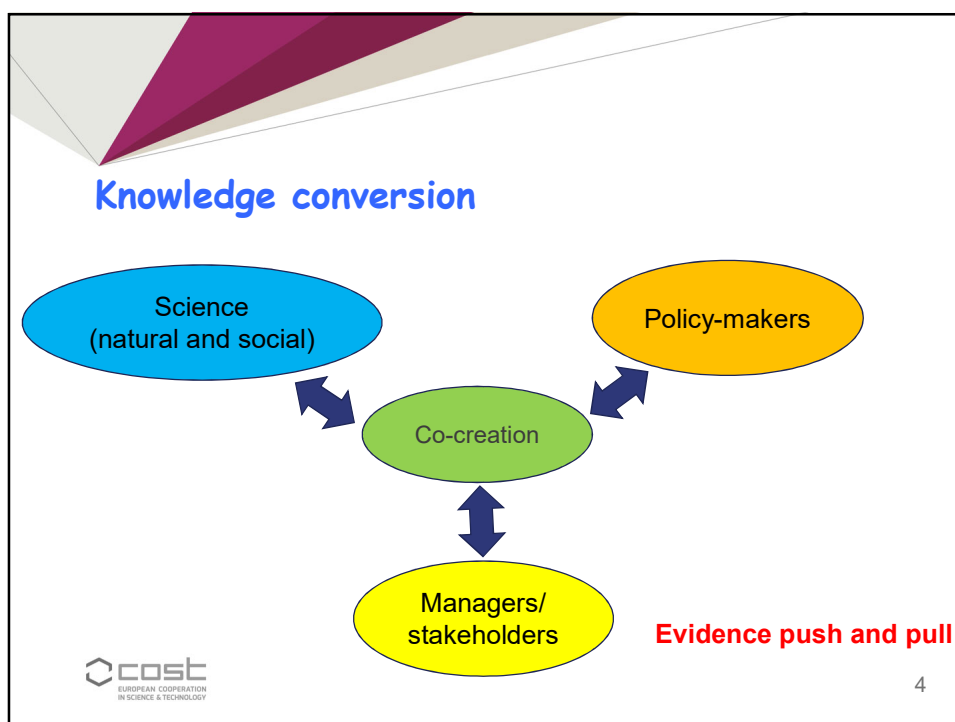
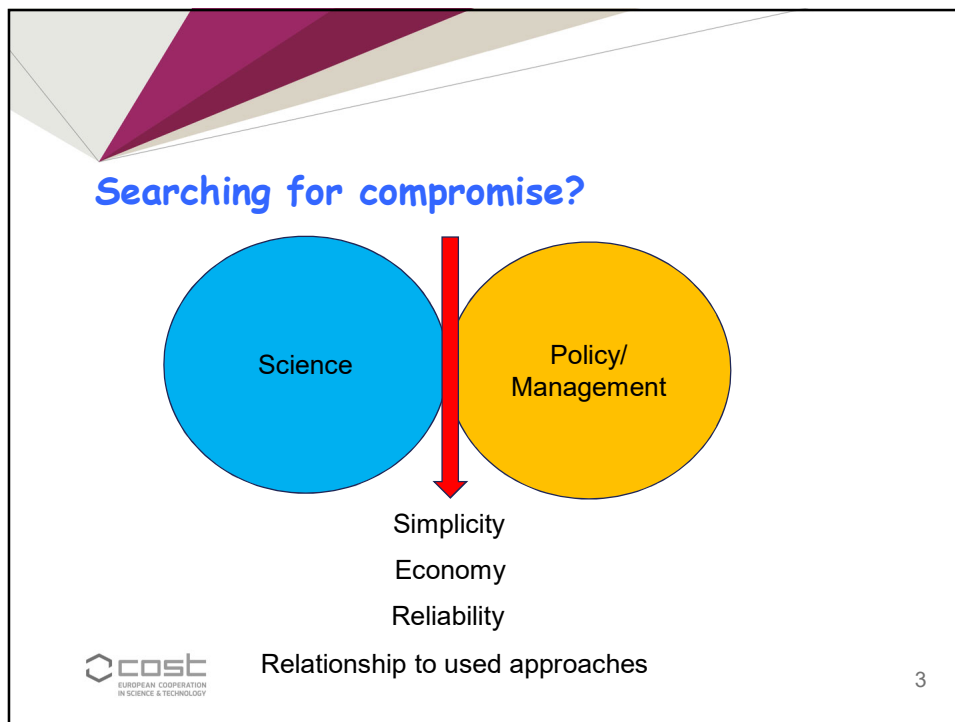


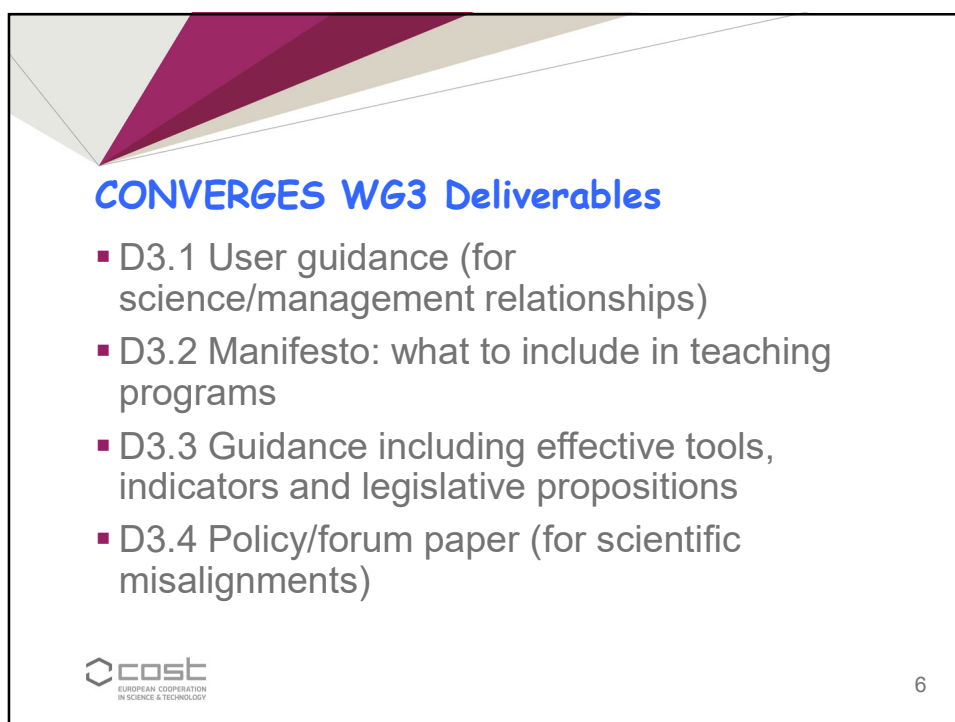
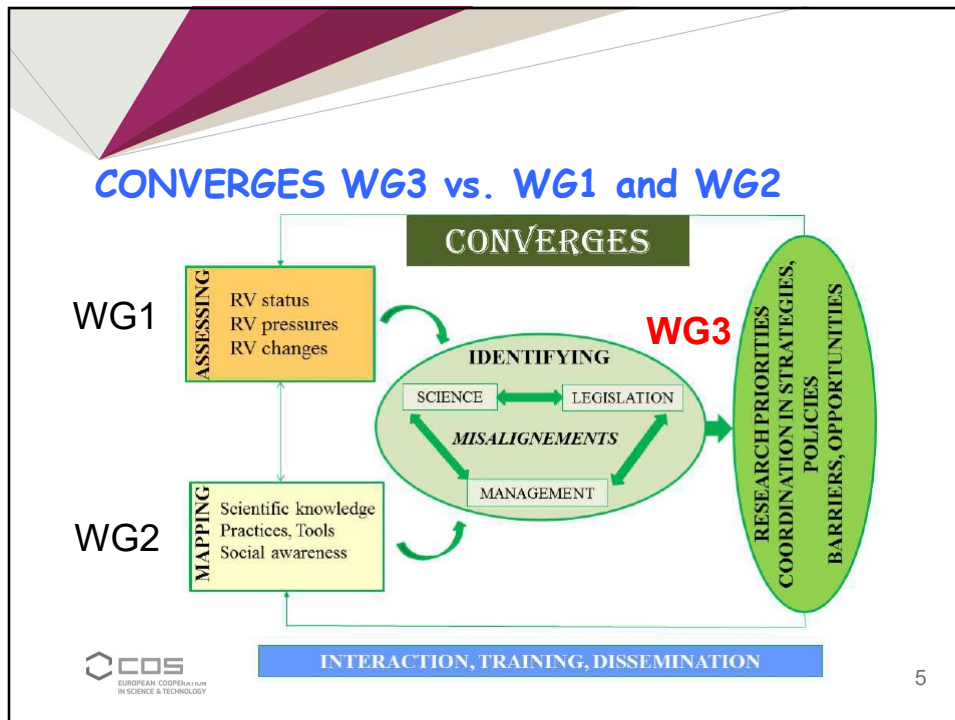
RESEARCH CONCLUDES:  
**WE ARE DESTROYING EARTH.**

COULD YOU KINDLY  
ESTIMATE THAT IN  
EQUIMOLAR, INACCURATE,  
NON-SELF-SEPARATING AND  
SOURNOUSLY TENDENT  
WE CAN ALL UNDERSTAND?

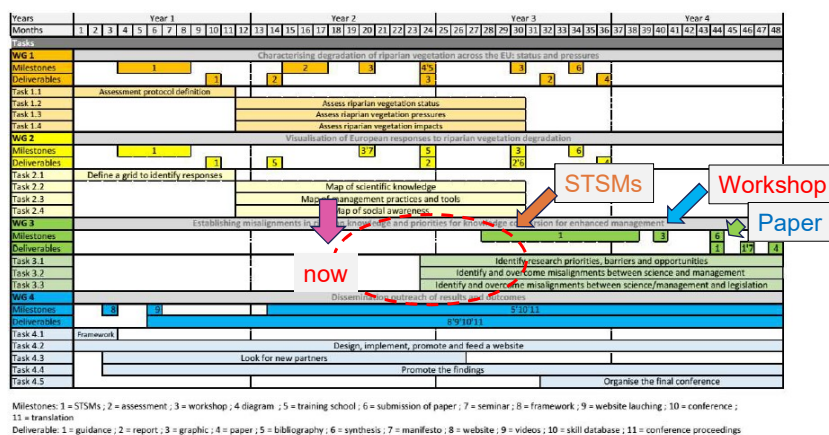
 **cost**  
EUROPEAN COOPERATION  
IN SCIENCE & TECHNOLOGY

2





## CONVERGES WG3 Timescale



## CONVERGES WG1 and WG2 input to WG3 – present condition

- Science (plenty of information) – mostly future
- Management (some information) – present/past
- Legislation (some minor information) – past/present

## CONVERGES WG3 Legislation and management (decision makers)

- **Questionnaires** – legislation and decision making in COST member states related to riparian zones
- **Overview:** European Directives related to riparian vegetation/zones and their implementation in different countries
- **Close cooperation with WG2**

## Case study: legislation and management of riparian zones in Slovenia



### 1. Water act (Water management)

Riparian zone width:

1st order streams and rivers: 15 m/40 m

2nd order streams: 5 m

River basin management plan  
Flood risk management plan



### 2. Act on Forests (Forestry management)

Riparian forests (special category) (> 0.25 ha)

Forest management plan (and game)

### 3. Nature Conservation Act (Natura 2000)

Forest habitat types (at least 2 related to river riparian zone)

Natura 2000 management plans

### 4. Act on Agricultural areas (Farming)

Farmers – „individual plans“

## CONVERGES WG3 regional workshops

- There are differences among regions;
  - Natural conditions
  - Human impact (pristine/degraded)
  - Management practices (present and past)
  - EU Directive implementation/not obliged
  - Legislation and decision making
- Management practices concentrated on **restoration**
- Management practices concentrated on **sustainable management/conservation** of riparian forests
- **When:** most in summer/autumn 2020
- **Where and who:** in different regions (some proposals: France, Czech Republic, UK, Balkan area, Portugal/Spain, nordic countries?)

## CONVERGES WG3 STSMs

- STSM to prepare framework (2019/2020)
- STSMs: gaps between regions, disciplines? (2020/21) – after the regional conferences

## CONVERGES WG3 Next WGB

- Launch activities
- STSM to prepare framework
- Discussion and validation of the framework - next annual meeting

