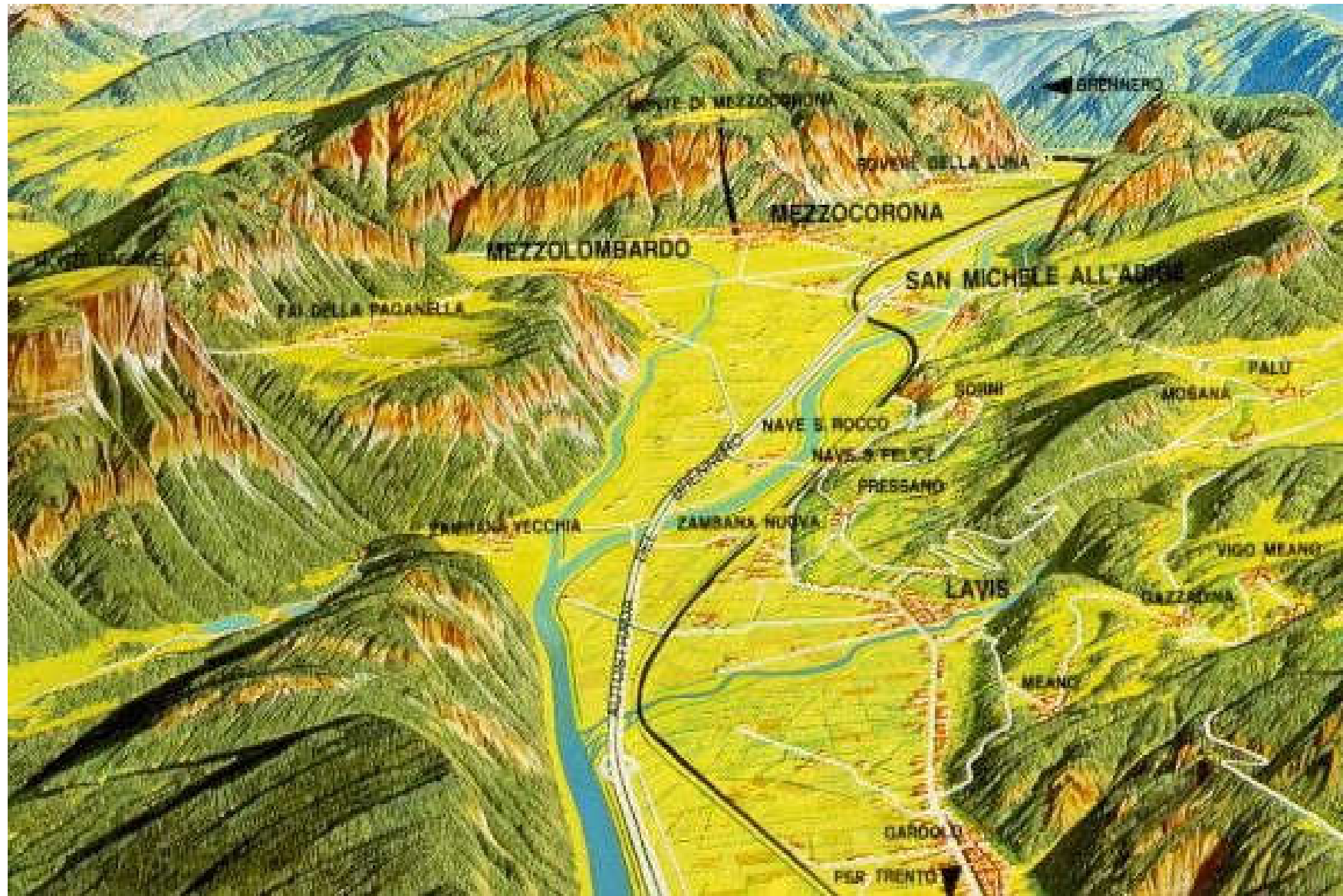


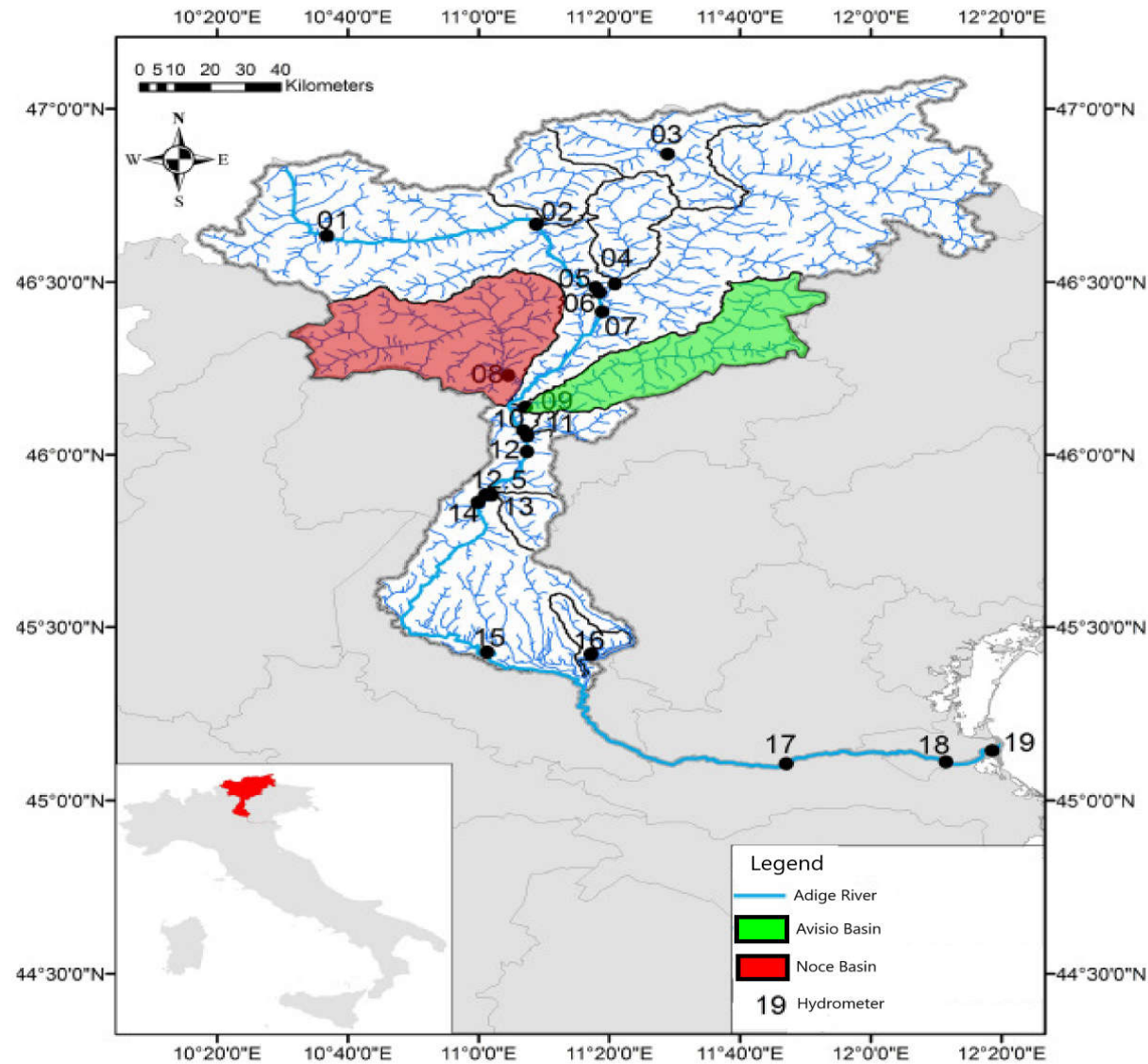
DETECTION OF CHANGES IN RIPARIAN VEGETATION IN PIANA ROTALIANA (ITALY): COMPARISON OF THREE DIFFERENT FLUVIAL SYSTEMS

**Stefano GOBBI, Marco CIOLLI, Giulia CANTIANI, Duccio ROCCHINI,
Clara TATTONI, Nicola LA PORTA**

Piana Rotaliana with rivers Adige and Noce (left) and Avisio (right)



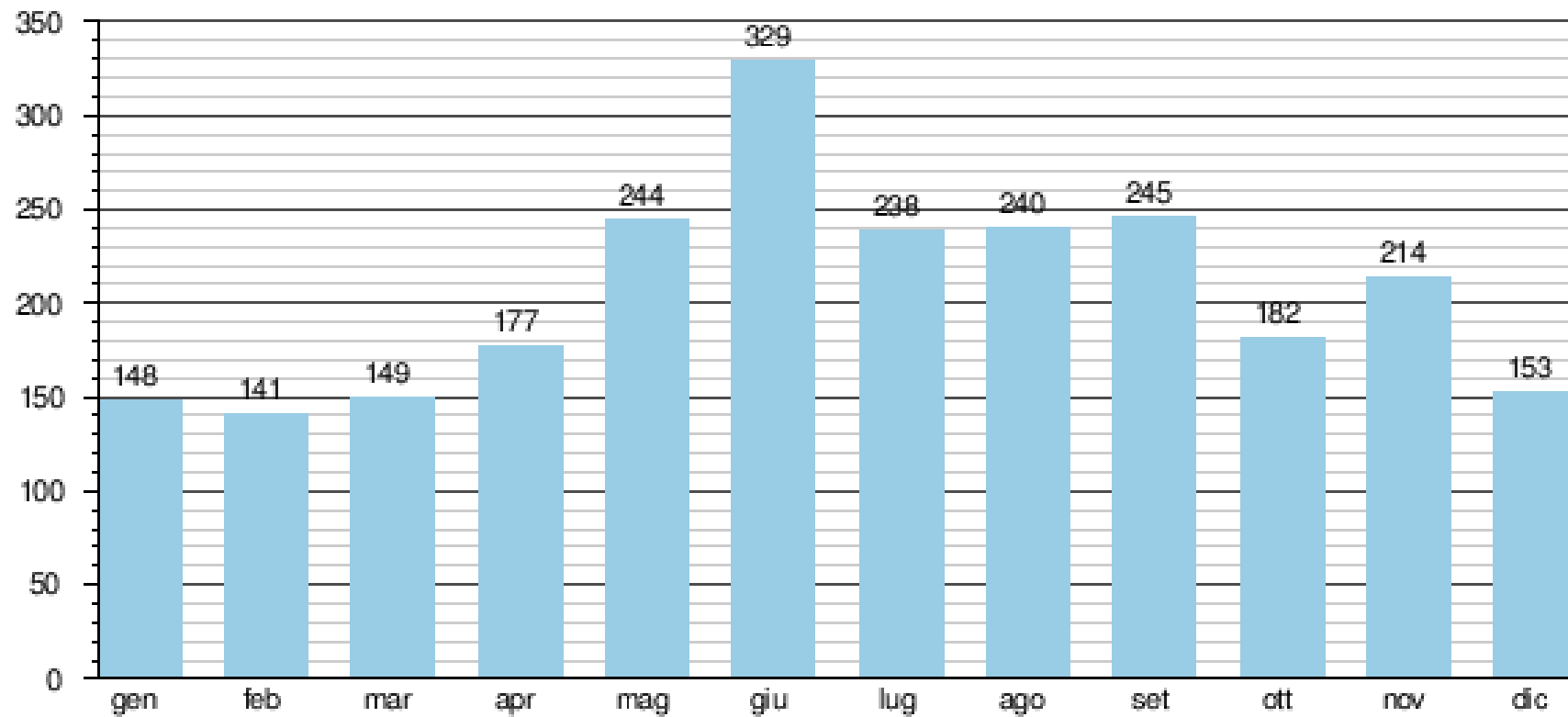
The basins of the three rivers interested by the study



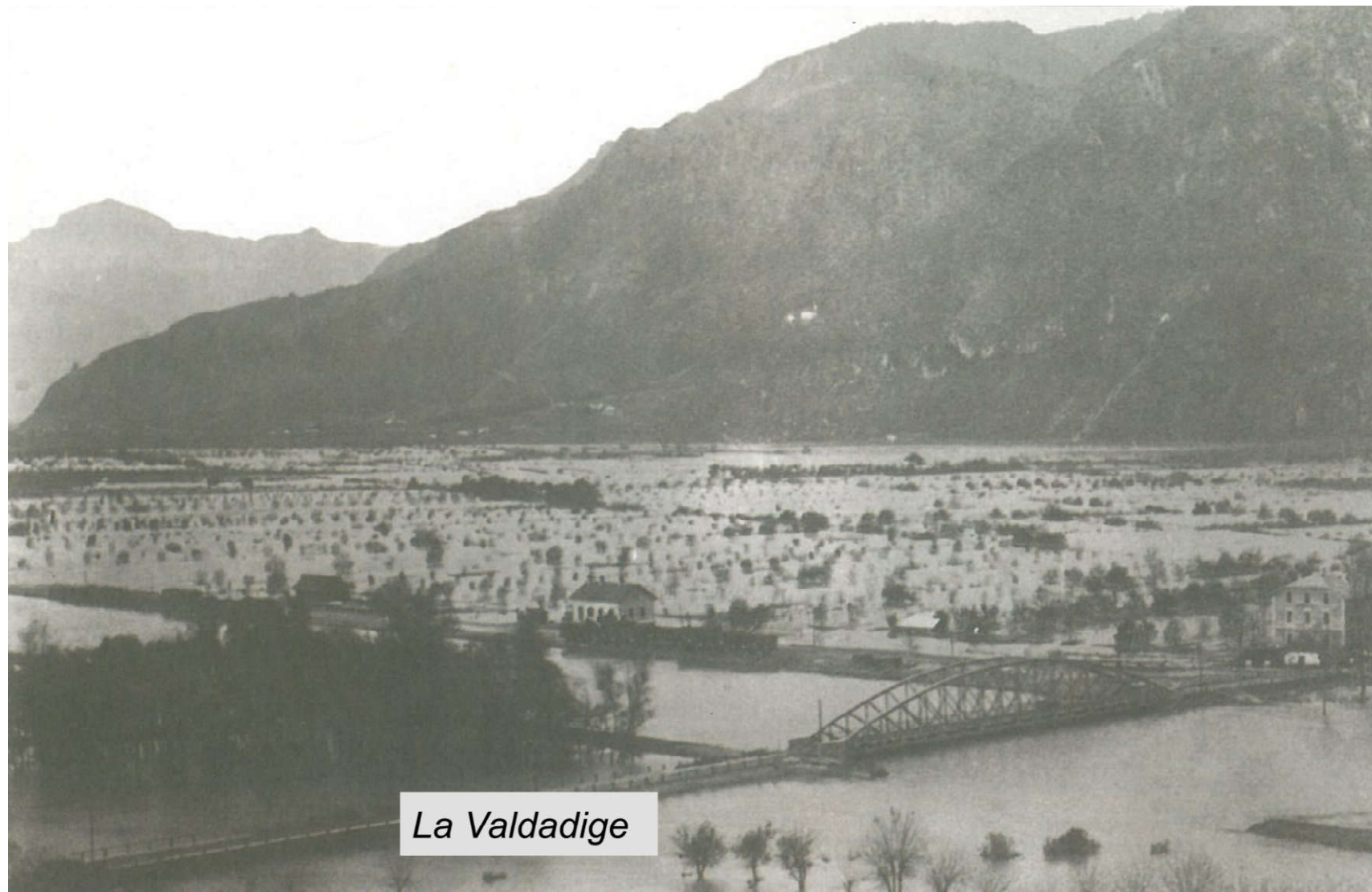
Rivers traits

RIVER	Lenght (Km)	Basin size (Km ²)	Elevation average (m.a.s.l.)	Average slope (%)	Flow rate average (m ³ /sec.)	Lenght in Piana Rotaliana (Km)
<u>Adige</u>	410	12,100	1,500	49	235	15,74
<u>Noce</u>	105	1,367	1,624	50	34	8,75
<u>Avisio</u>	88	910	1,663	52	23,5	7,20

Average monthly flow rate of Adige river



Adige flooding in 1882 in Piana Rotaliana



Adige flooding in 1966 at Trento city



Adige flooding in 1966 at Trento city



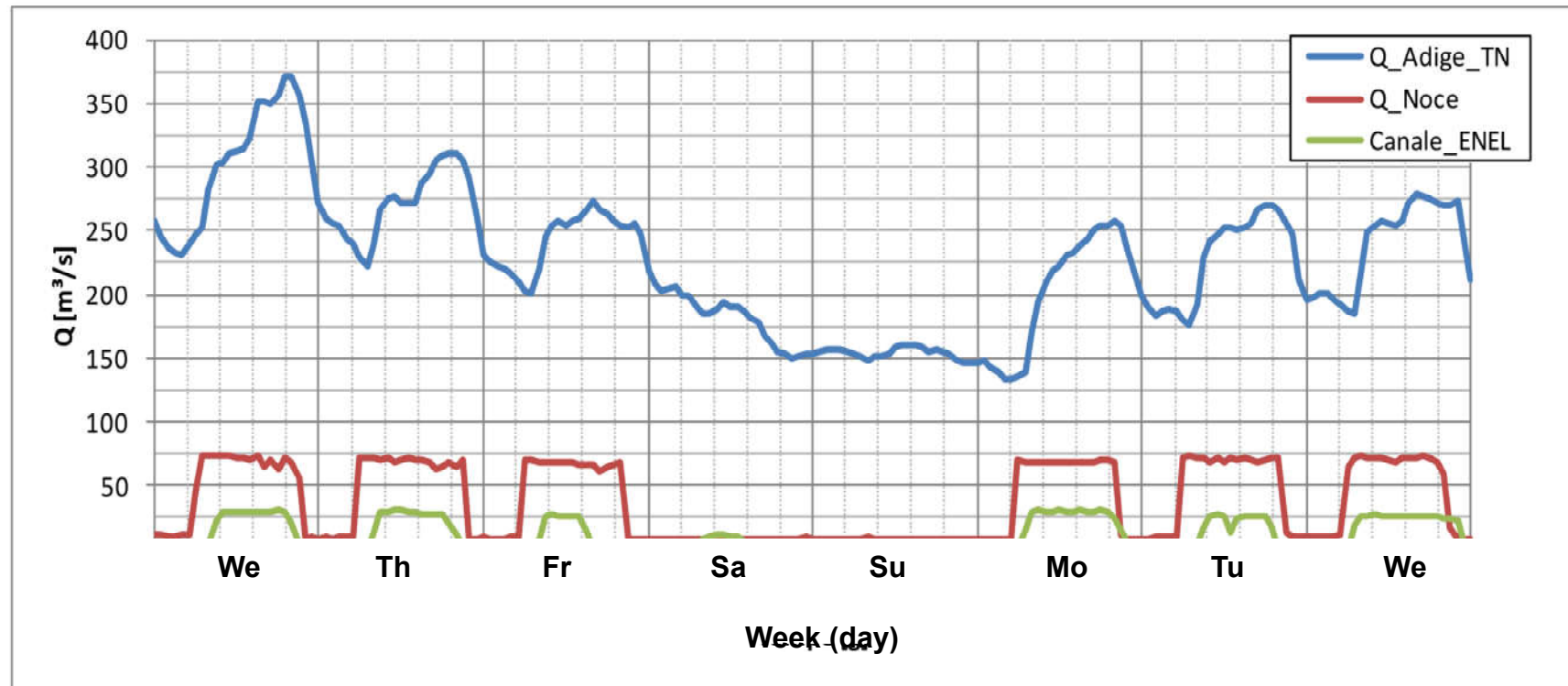
Dams distribution in the Adige-Noce-Avisio basins



Santa Giustina dam (182,000,000 m³) along Noce river



Example of Adige river flow rate along the week



Maps projection and resolution

Maps of **1859**, **1954**, **2006** and **2015**



WGS84, UTM 32 N projection

Maps of **1973** and **1994**



RM40 Gauss-Boaga projection.

Resolutions (m x pixels):

1859 **1m**
1954 **2m**
1973 **1m**
1994 **1m**
2006 **1m**
2015 **1m**

It was not possible to use the **1936** maps (*Italian Kingdom Forest Map*), because the little scale (1:100000) and no report on riparian vegetation in agricultural sites.

The land use classification used to extract riparian vegetation

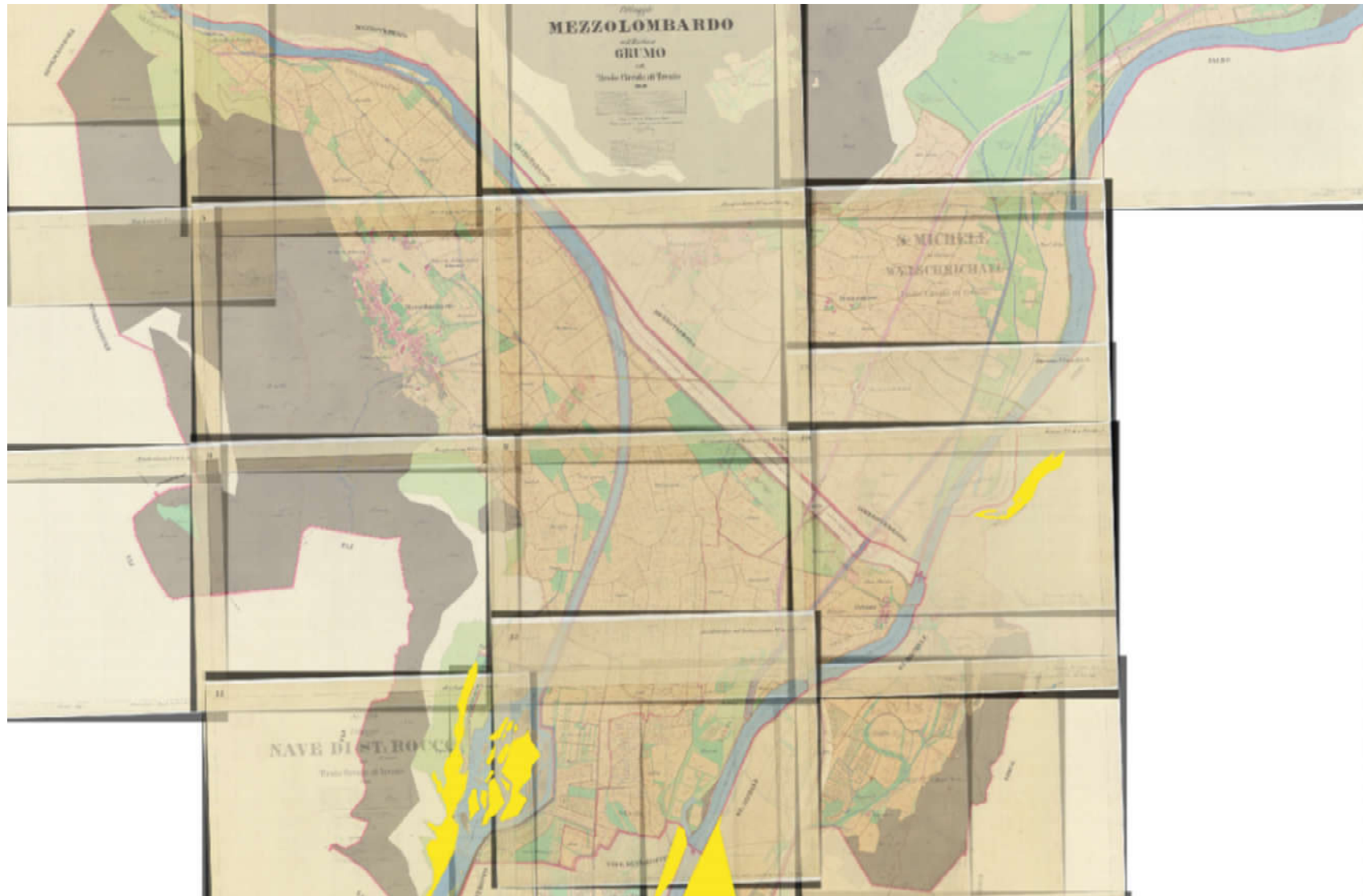
Object Base Image Algorithm (OBIA), implemented in GRASS GIS, a Free and Open Source Software, was used. The algorithm is based on the segmentation of images into elements which are then recognized, through machine learning, in different land use categories based on the **spectral**, **textural** and **geometric** response of the elements of the images under examination.

In this way it was possible to classify single gray band and multiple band images **using a single algorithm**. Since the input data are very heterogeneous OBIA has been chosen because its **flexibility** in treating different data sources.

The precision achieved in the recognition of the areas is quantified with the Kappa di Cohen method ($0 < k < 1$). In the current case results are accepted with **$k > 0.8$ (high concordance)**

The river area was buffered starting from the talweg of the rivers, and the vegetation **considered "riparian"** included a **strip of 20 m** from the visible bank line of the image, with exceptions where the high slope of the ~~mountains was a natural obstacle to the eventual flood.~~

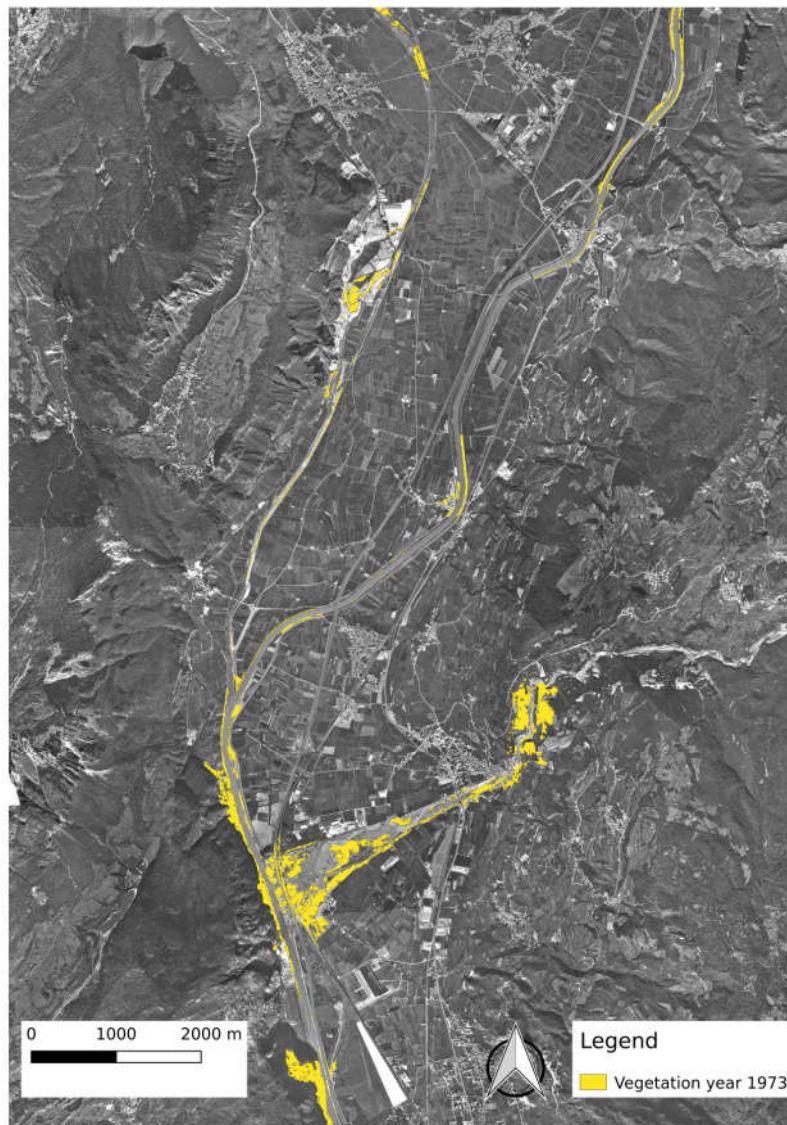
Rectification of the river Noce in the Piana Rotaliana 1850-1853



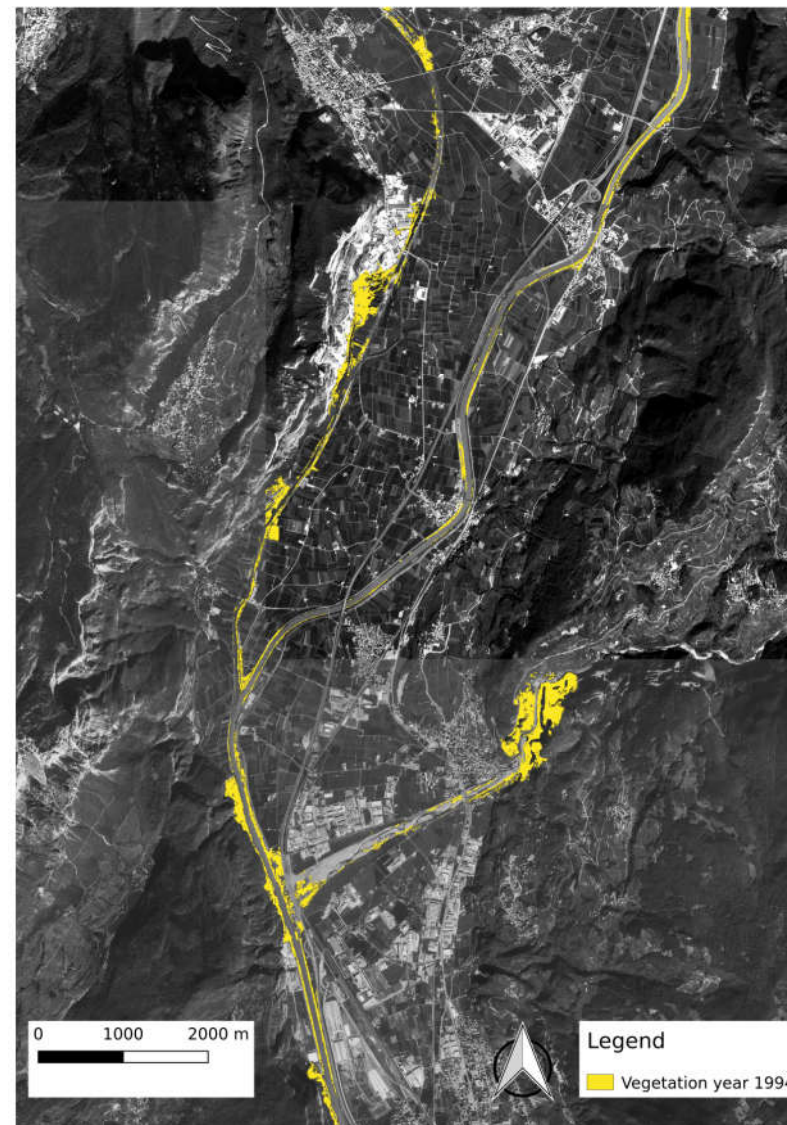
Rectification of the river Adige in the city of Trento 1850



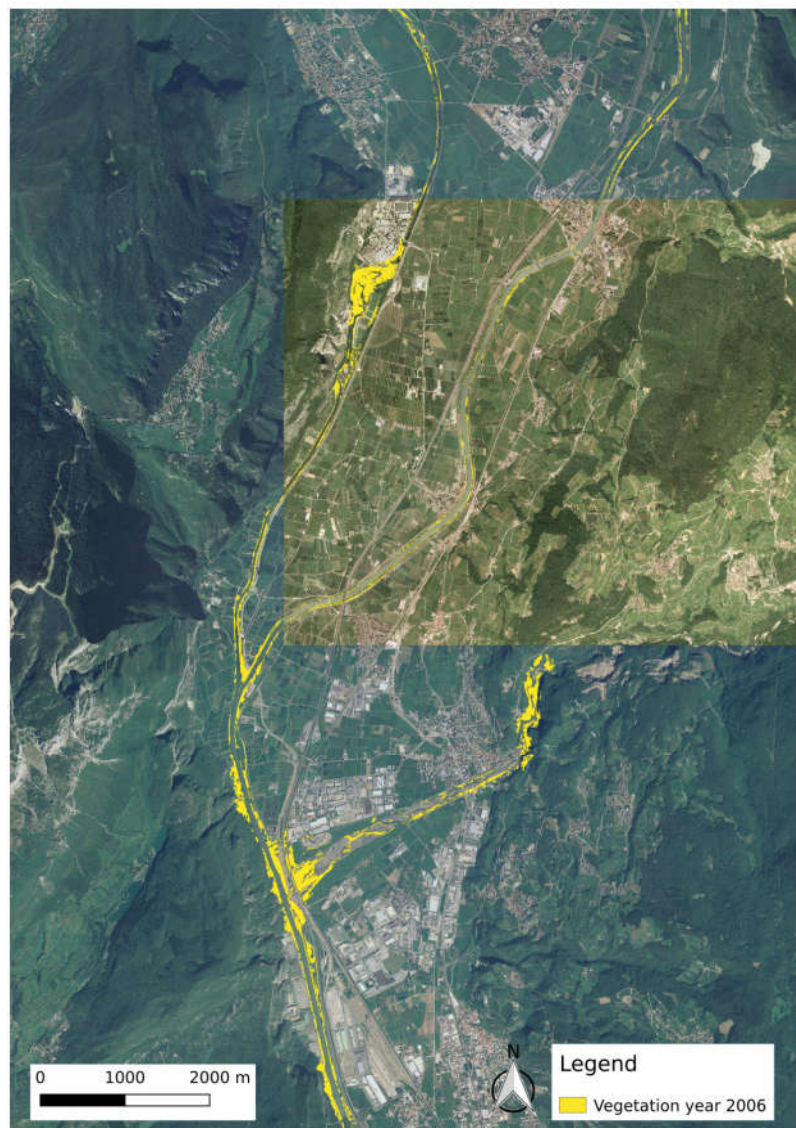
1973



1994



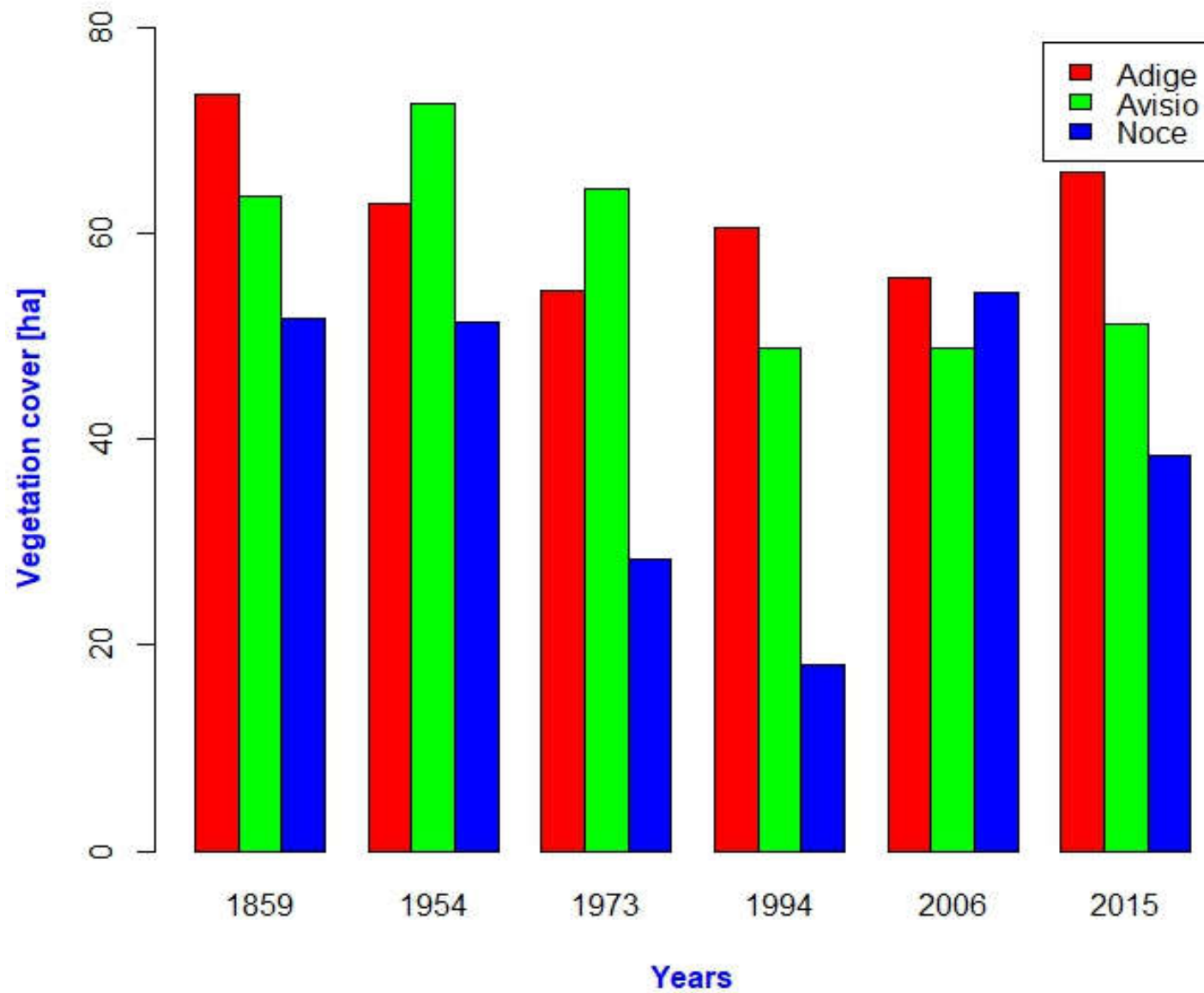
2006



2015

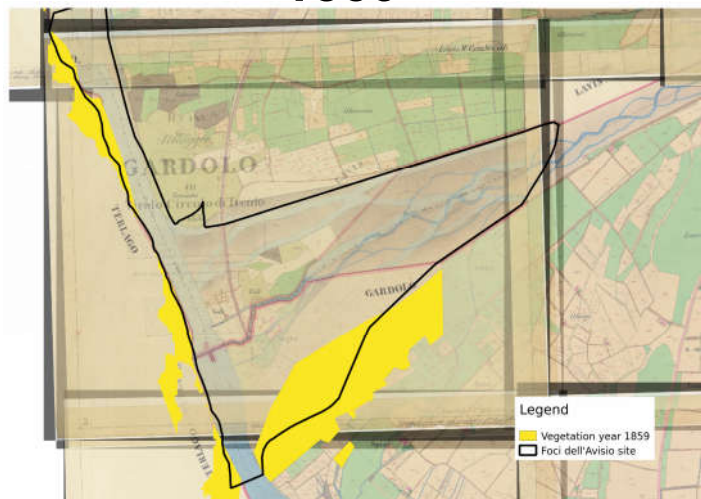


Variation of riparian vegetation in Piana Rotaliana

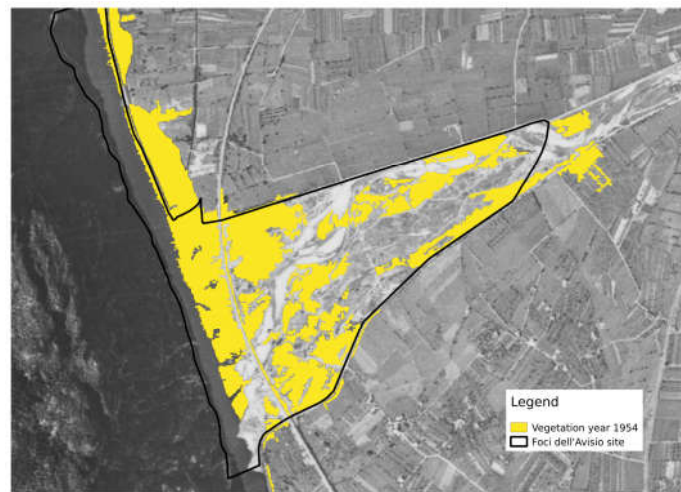


Site of Community Importance - Foci dell'Avisio

1859



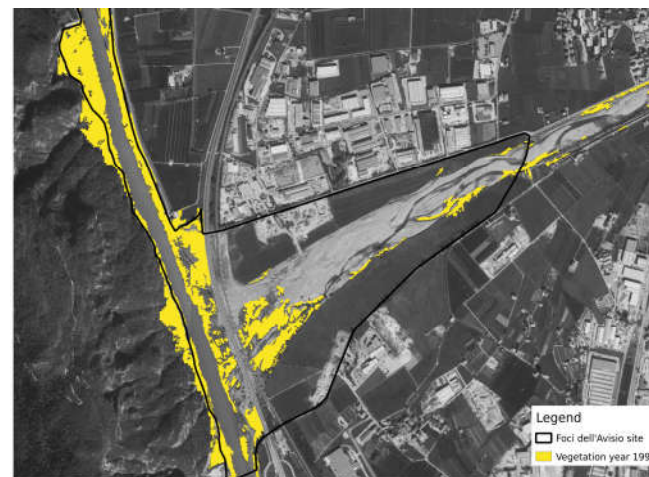
1954



1973

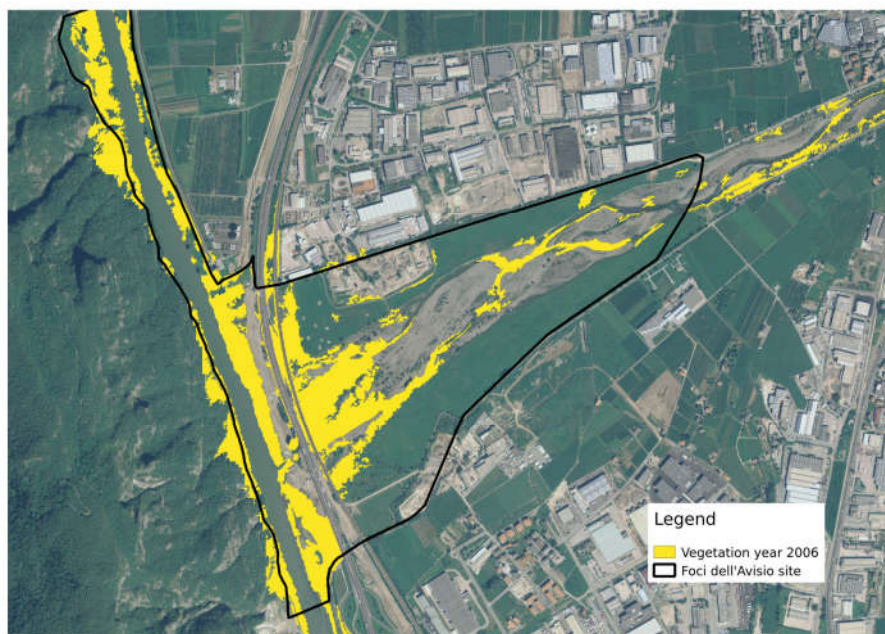


1994

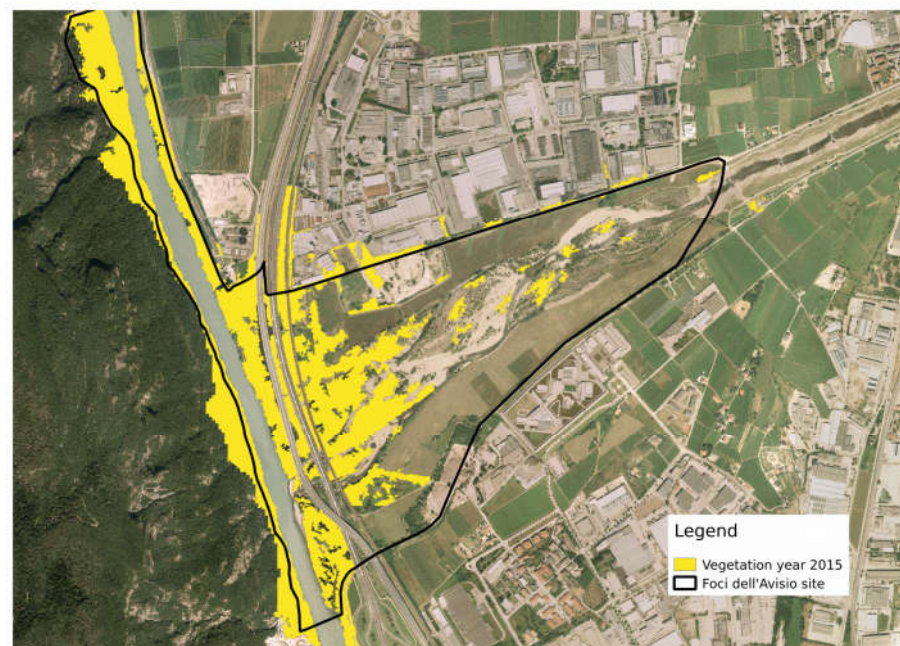


Site of Community Importance - Foci dell'Avisio

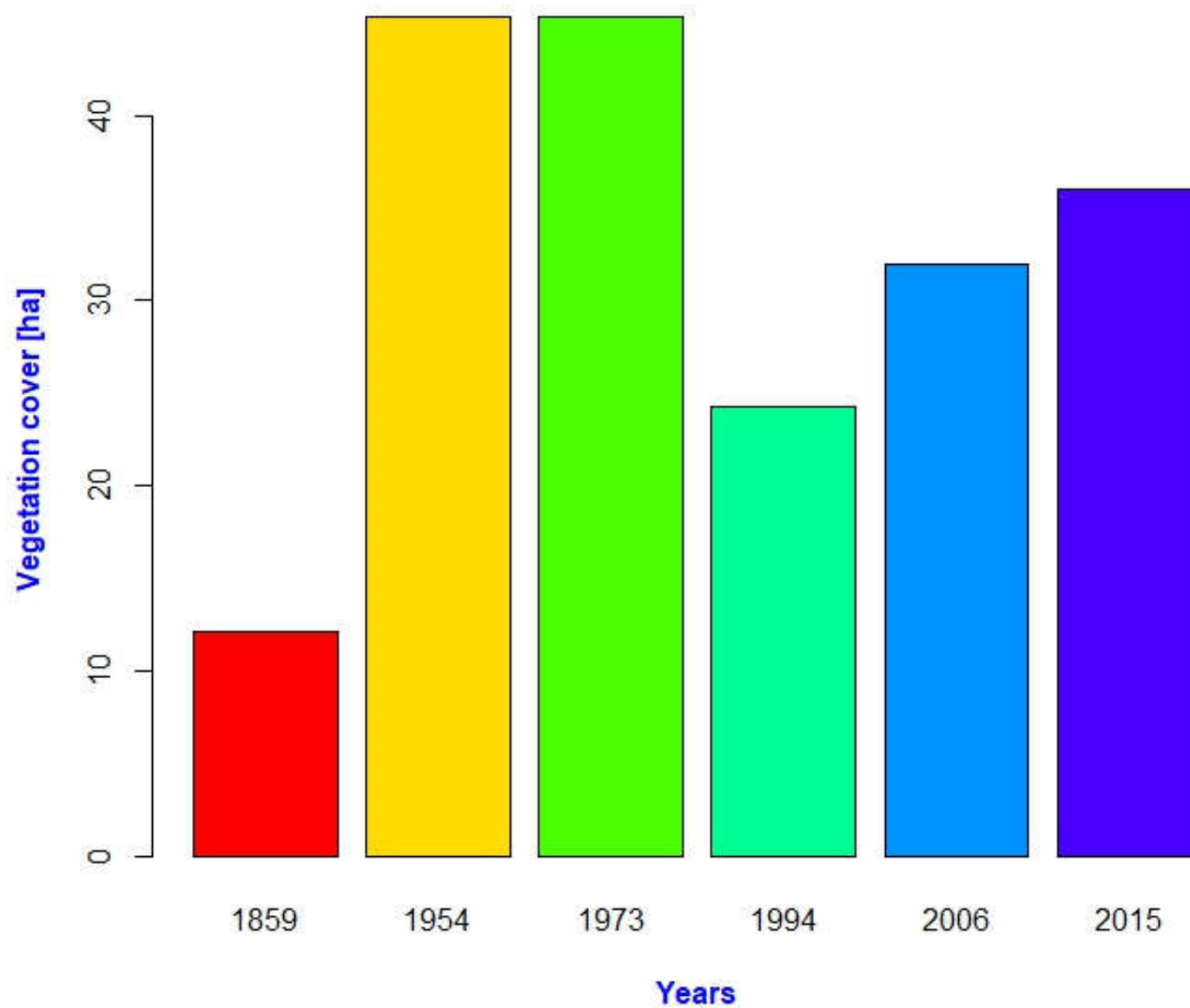
2006



2015



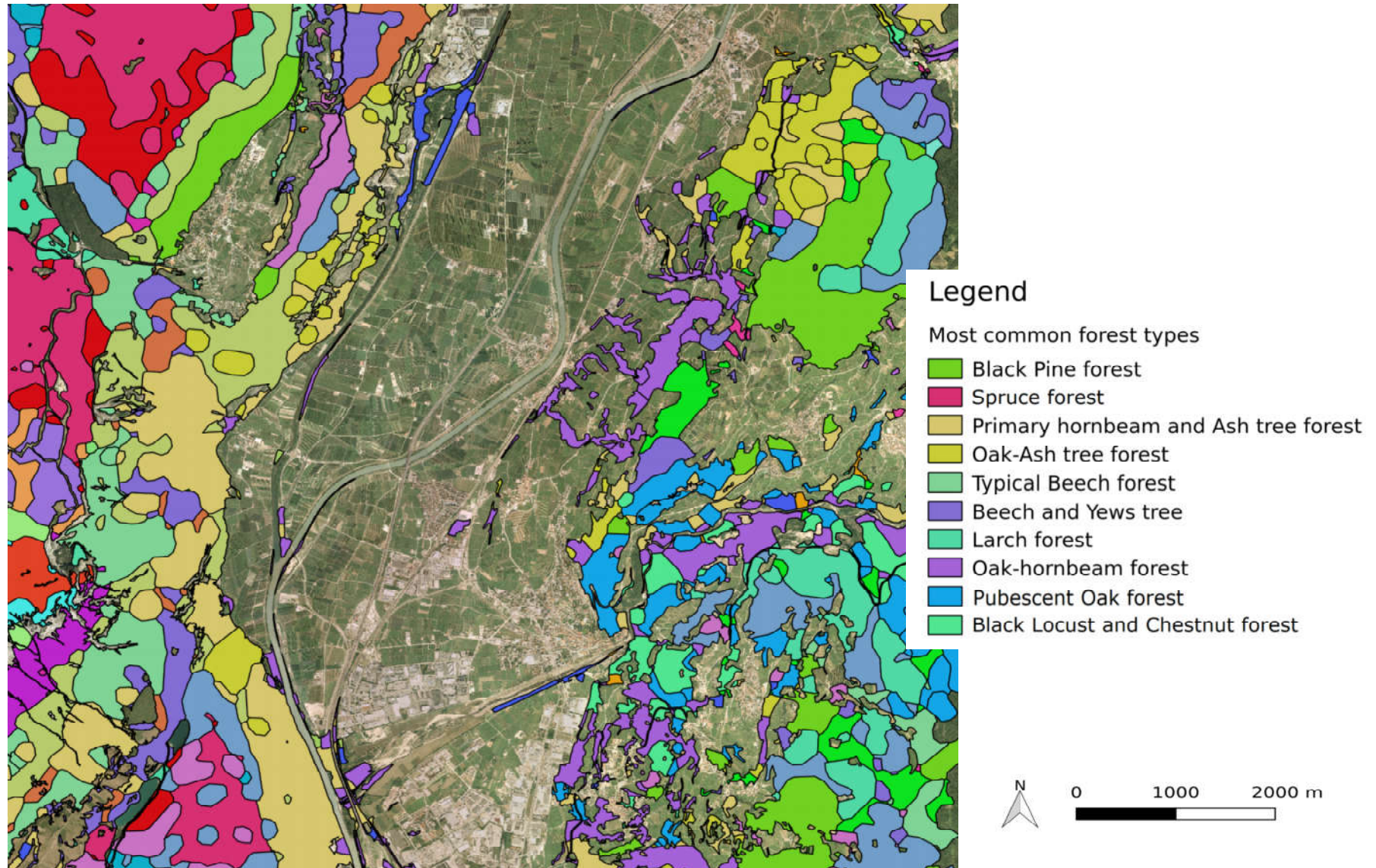
Variation of riparian vegetation in Foci dell'Avisio Site



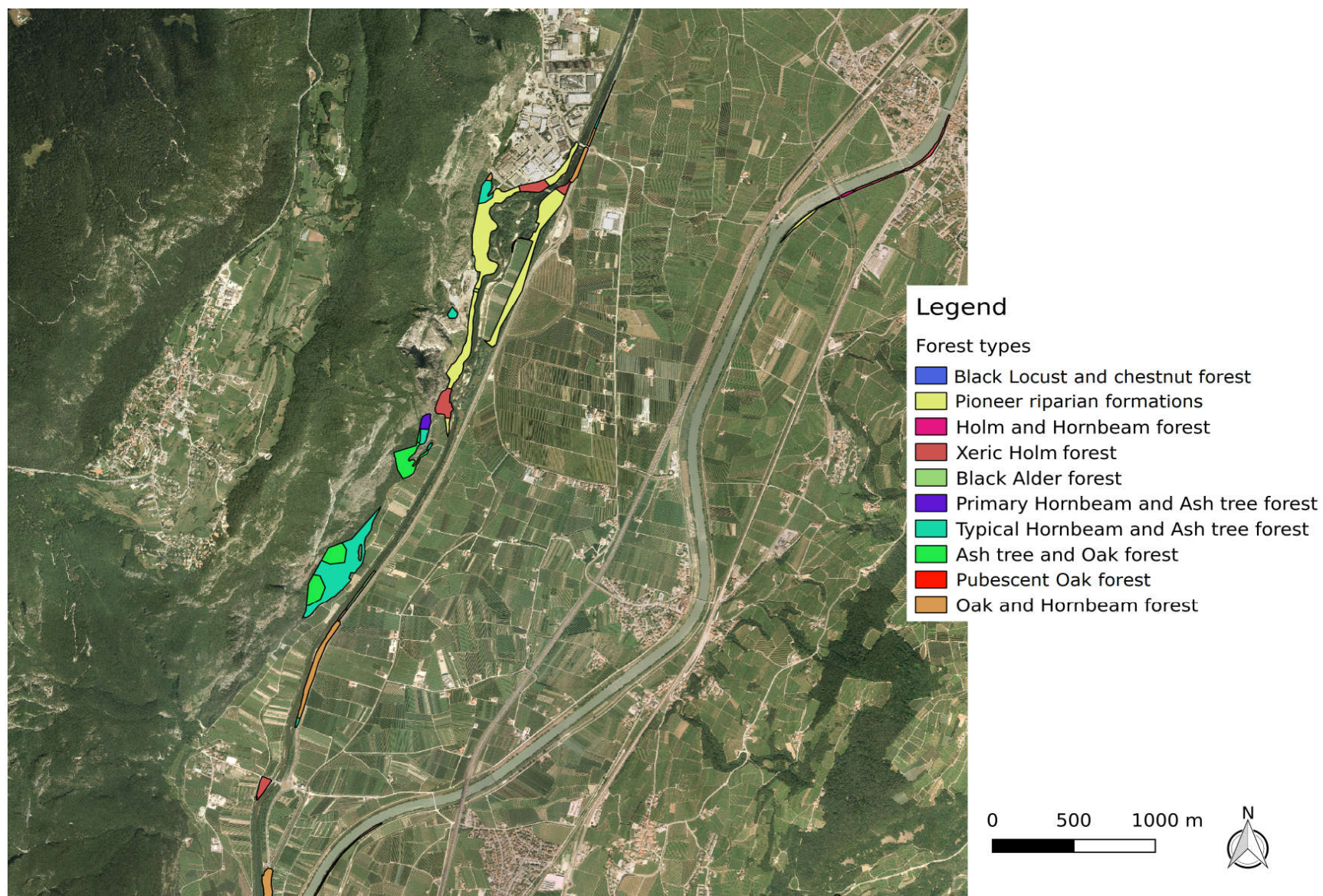
Site of Community Importance - Foci dell'Avisio (born 1992)



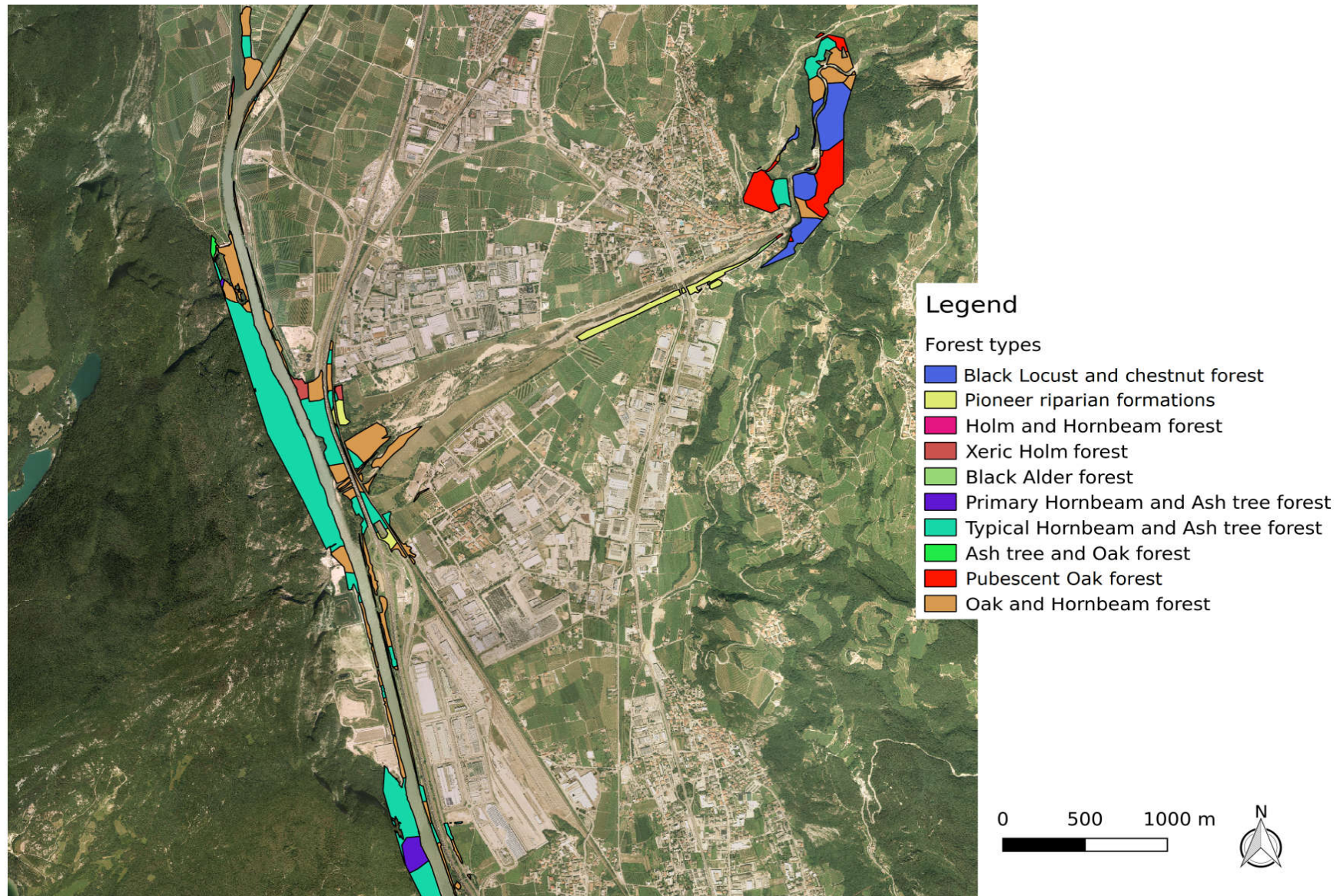
Forest types in Piana Rotaliana



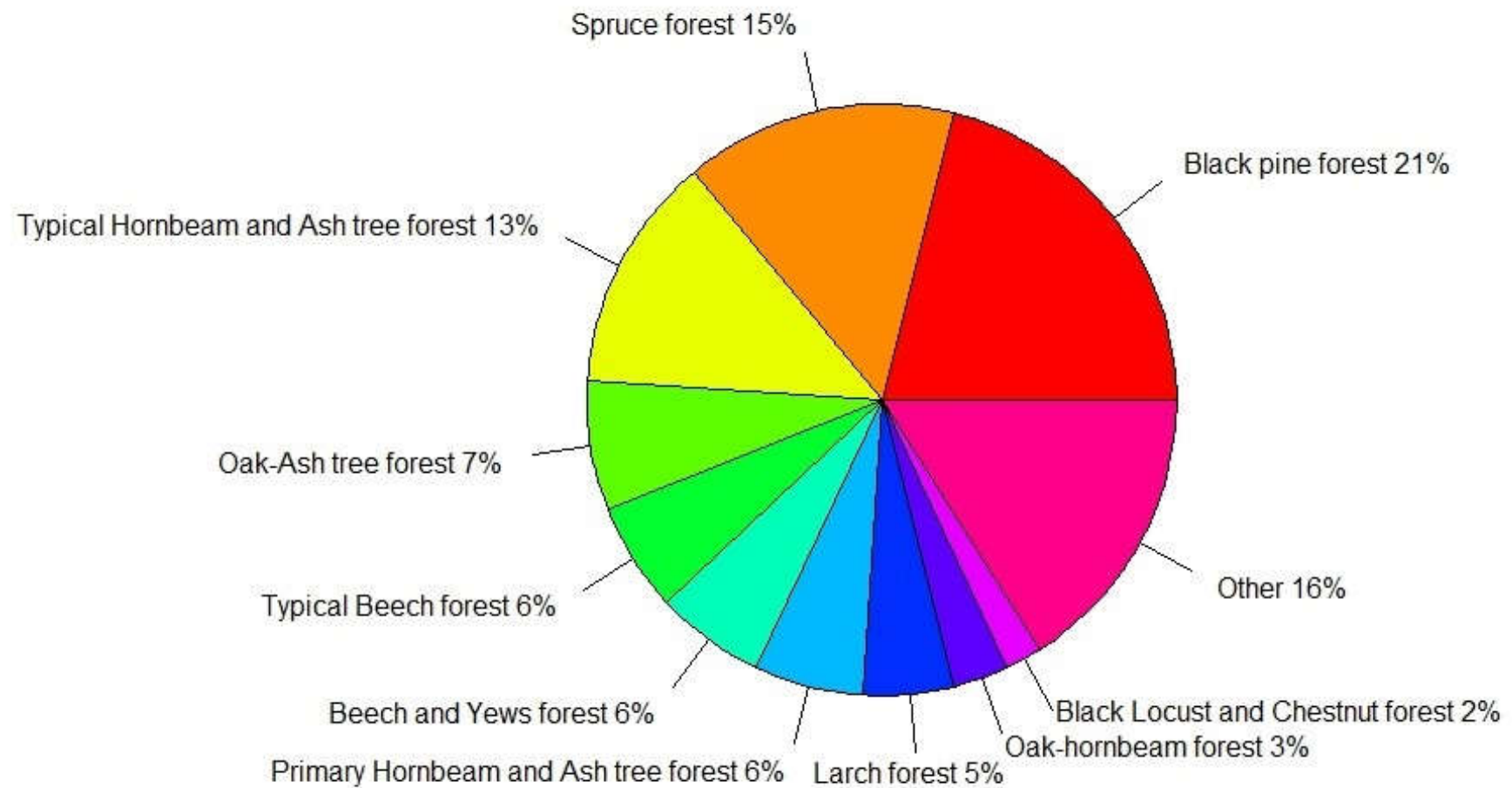
Forest types along Noce river



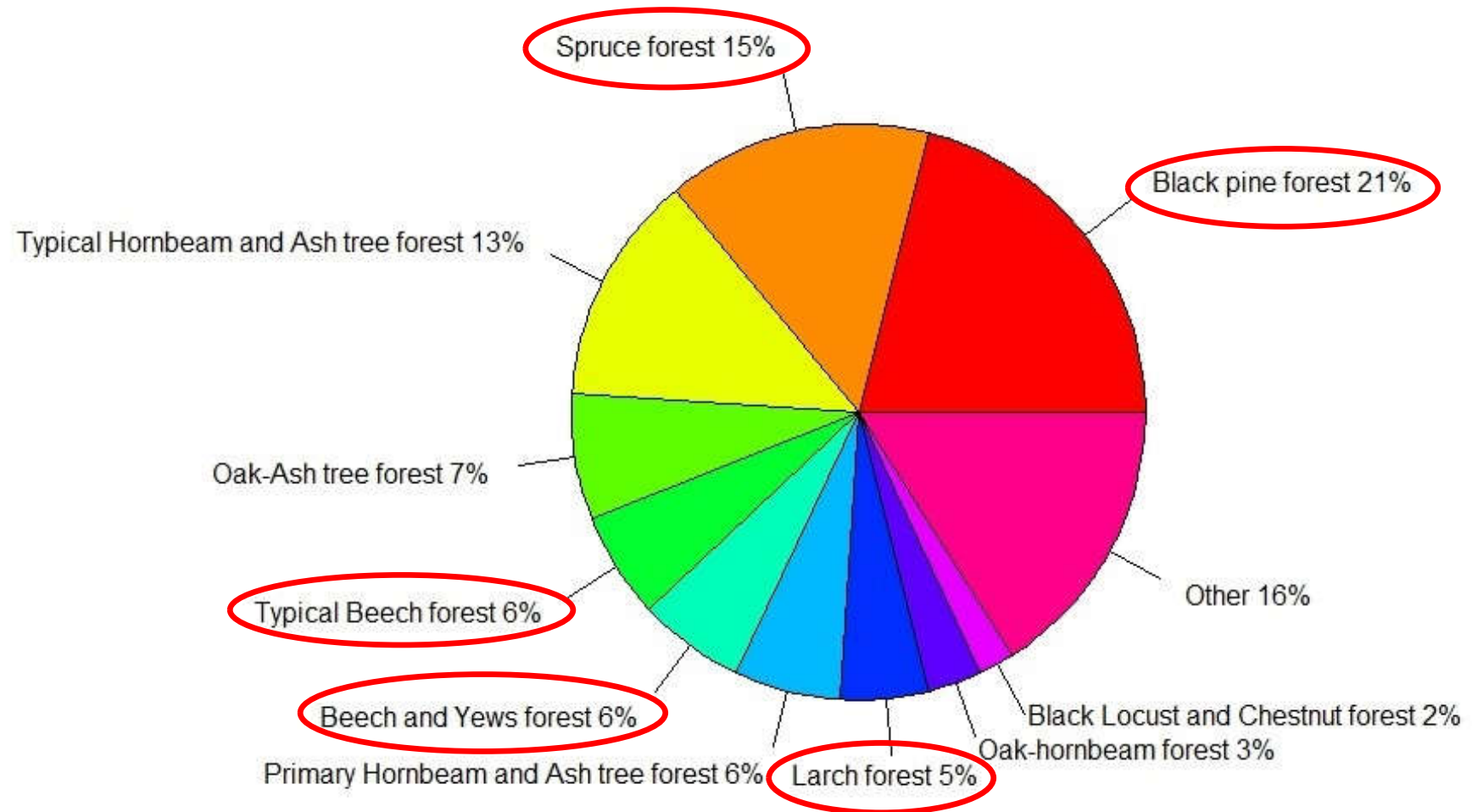
Forest types along Avisio river



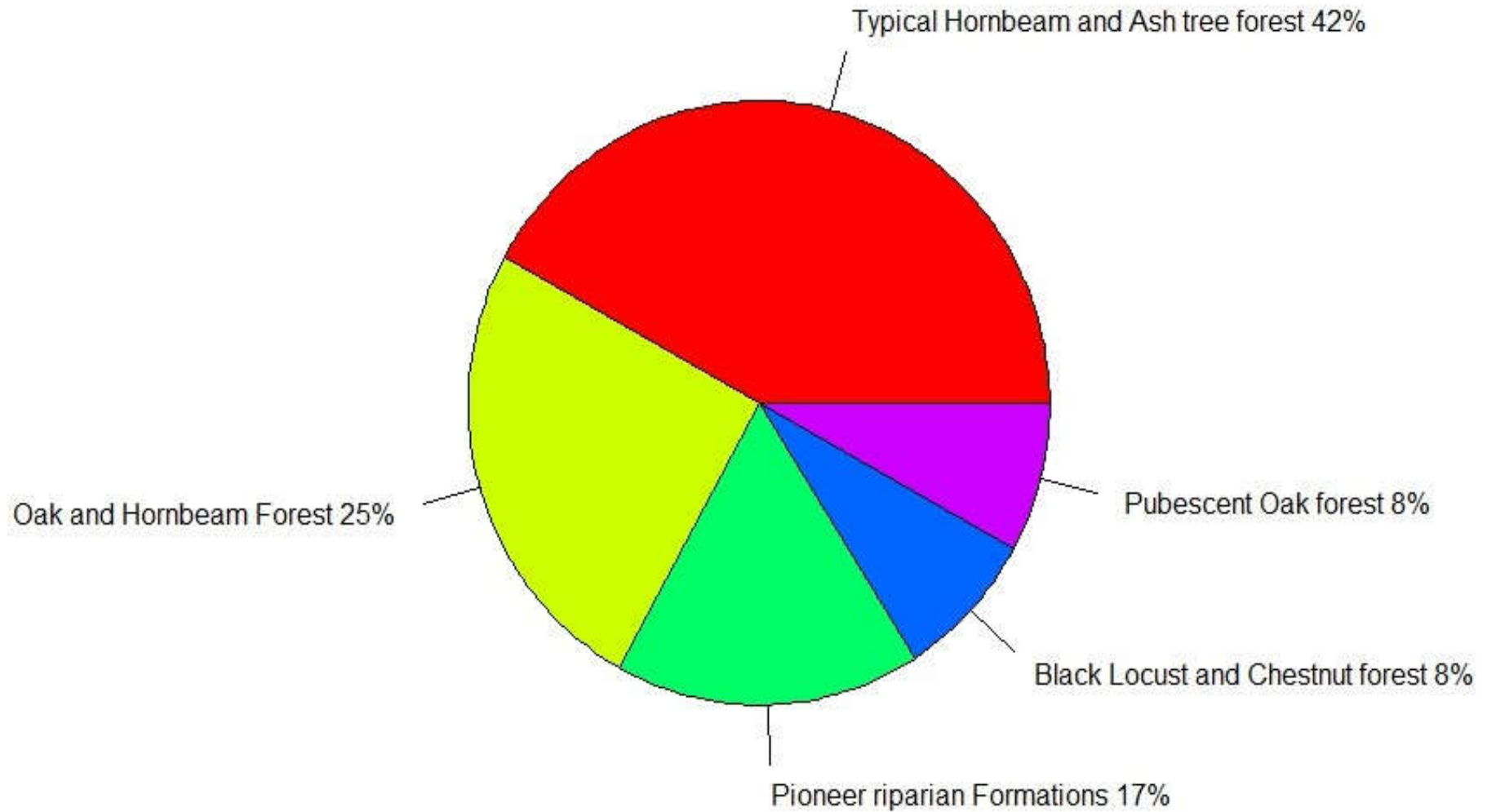
Different forest types in Piana Rotaliana



Different forest types in Piana Rotaliana



Different forest types in riparian vegetation



THANKS FOR THE ATTENTION

nicola.laporta@fmach.it