



Growing  
**ideas**  
through  
**networks**

## Establishing misalignments in riparian knowledge...: contribution to WG2 and relation to WG3

Urbanič G.

Institute for Water of the Republic of Slovenia

CONVERGES, WG2 workshop, Selfoss, 17 september 2018

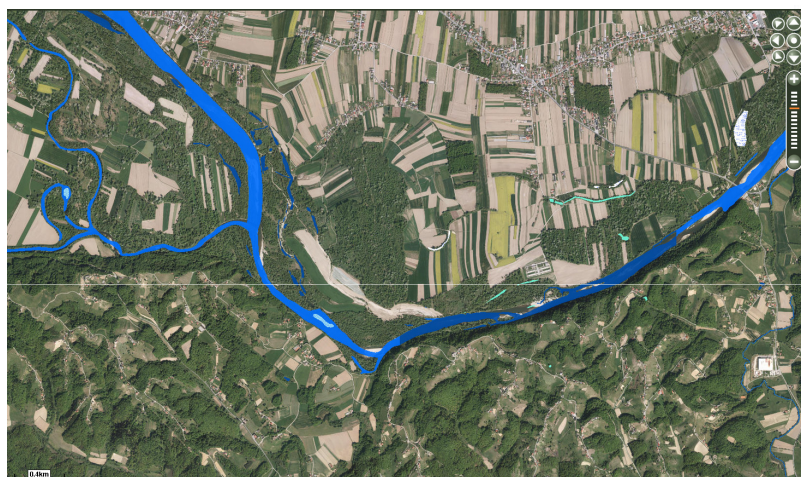


Funded by the Horizon 2020 Framework Programme  
of the European Union





# Riaparian vegetation management in Slovenia



Flood protection



Good ecological status

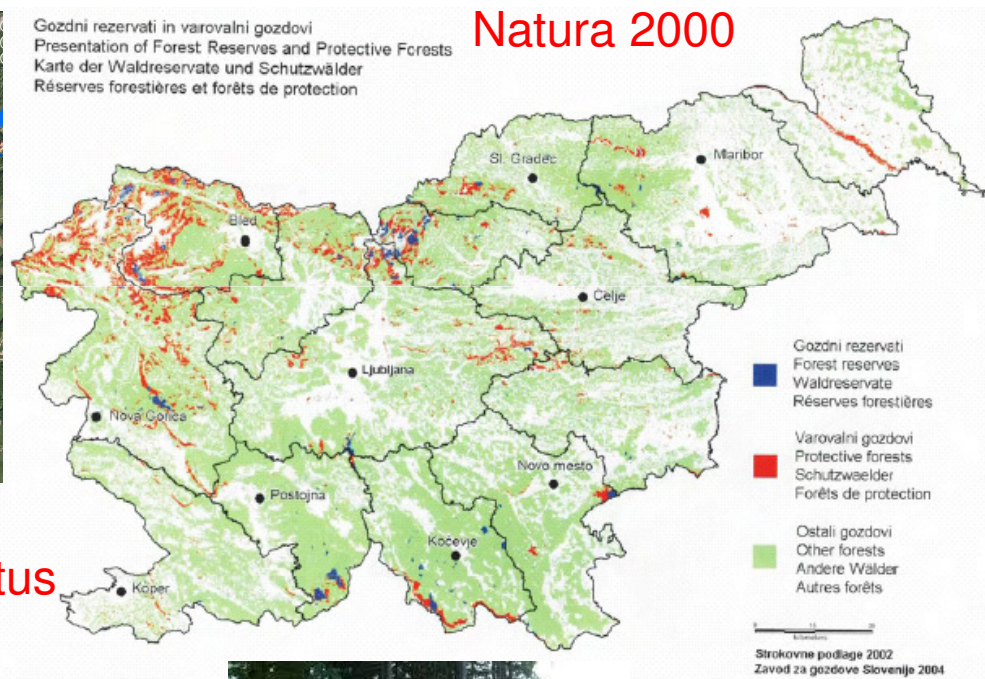


Flood Directive

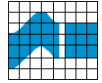
WFD

Gozdni rezervati in varovalni gozdovi  
Presentation of Forest Reserves and Protective Forests  
Karte der Waldreservate und Schutzwälder  
Réserves forestières et forêts de protection

Natura 2000

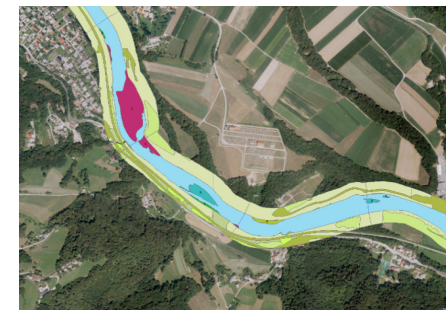


Forestry management



## Policy (management) oriented conception

- 1) Riparian areas delimited under this conceptions
  - Ownership and parcel boundaries
  - Standard designated widths of the riparian zone
  - Tracking of policy compliance







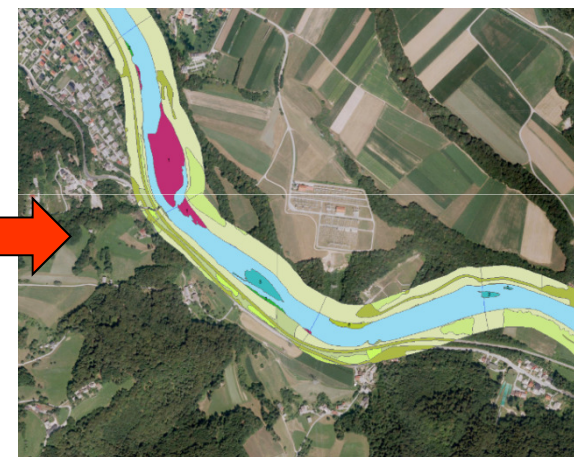
## Riparian areas in water management



**Ortho-photo**



**River channel**



**HM features  
including  
riparian zone**



## Bridging the gap

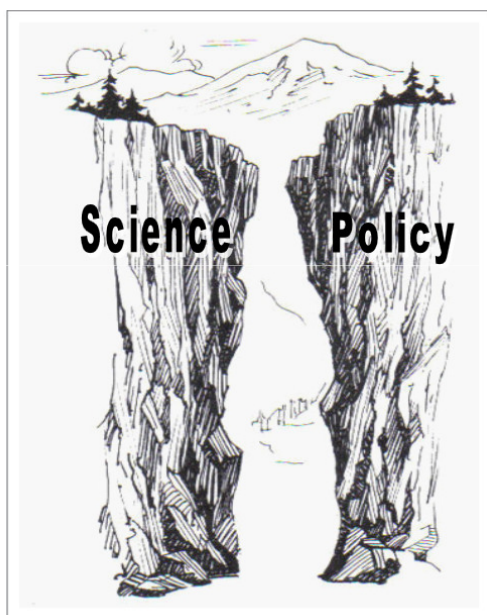


FIGURE 3  
The science-policy chasm

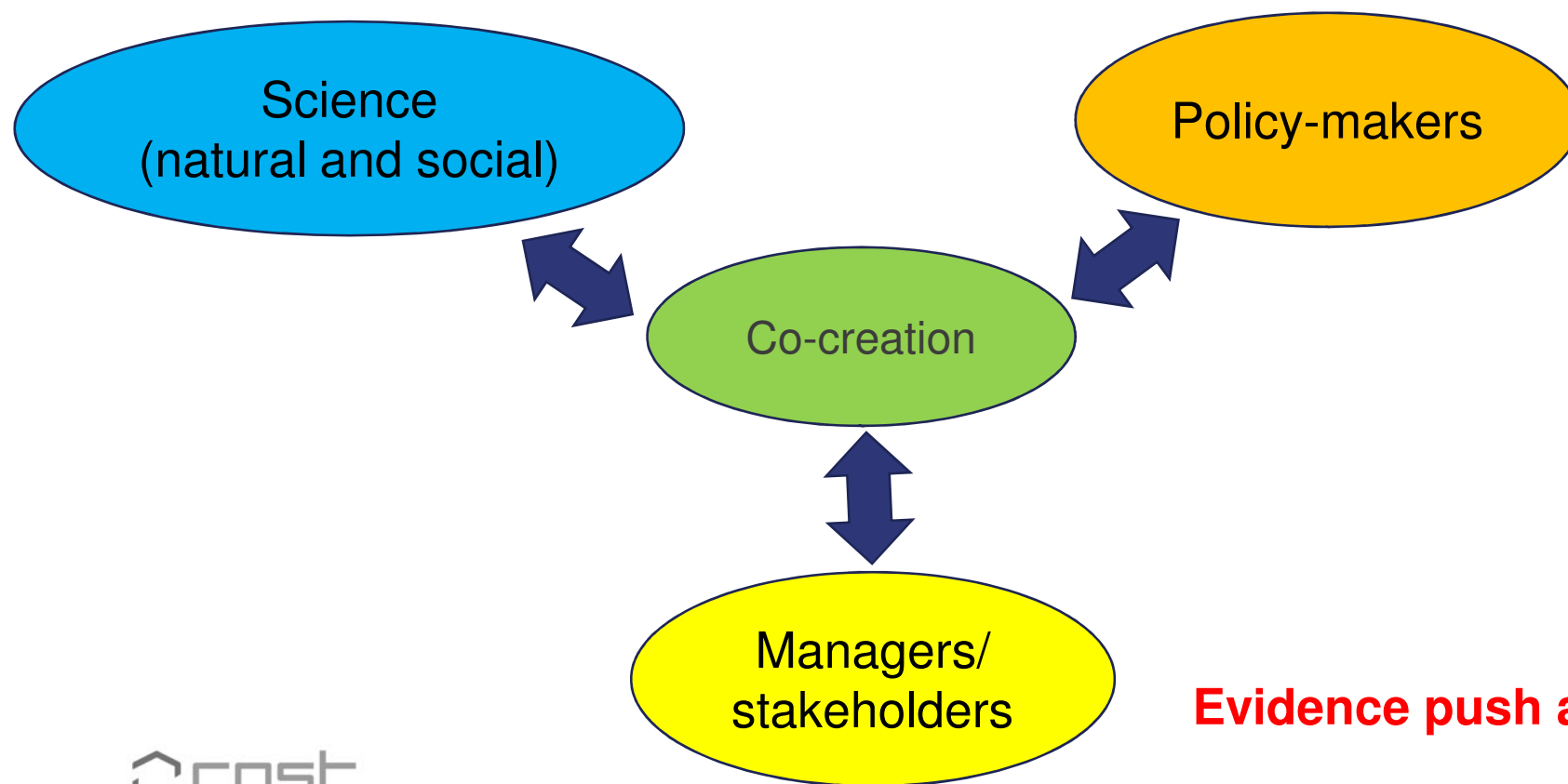
Godfrey et al. (2010)



<https://inl.wordpress.com/2008/07/10/les-sciences-cartoon-contest-vote-04-8-august-2008/>



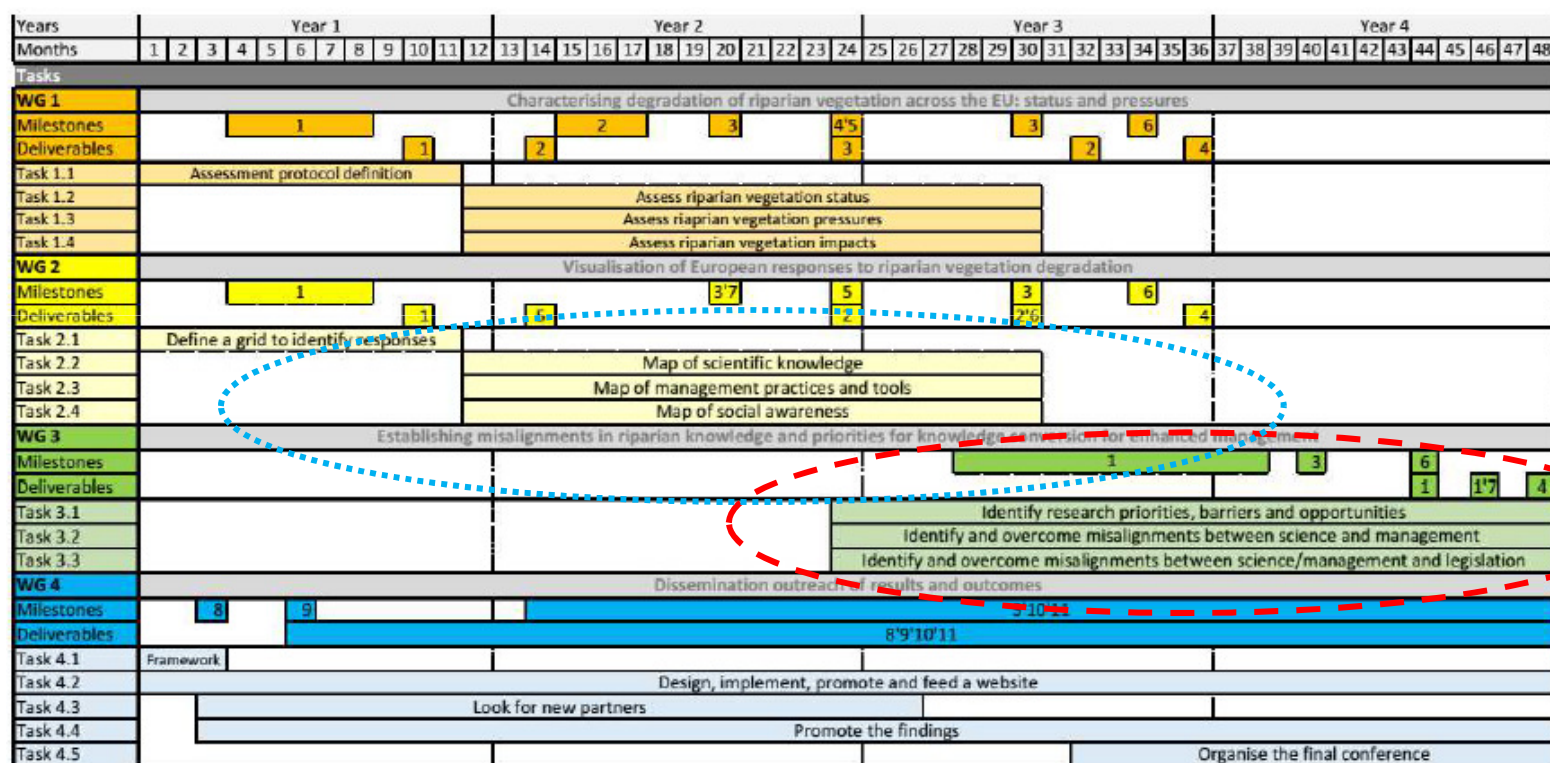
## Knowledge conversion



**Evidence push and pull**



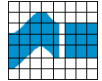
## CONVERGES WG2 vs. WG3



Milestones: 1 = STSMs ; 2 = assessment ; 3 = workshop ; 4 diagram ; 5 = training school ; 6 = submission of paper ; 7 = seminar ; 8 = framework ; 9 = website launching ; 10 = conference ; 11 = translation

Deliverable: 1 = guidance ; 2 = report ; 3 = graphic ; 4 = paper ; 5 = bibliography ; 6 = synthesis ; 7 = manifesto ; 8 = website ; 9 = videos ; 10 = skill database ; 11 = conference proceedings





## Science-policy misalignments

- Differences in current knowledge and management practices across Europe (comparability and transferability)
- Lack of effective communication and sharing of knowledge (different disciplines and countries)
- Insufficient knowledge conversion (academic to managers)
- Lack of suitable assessment tools (comparability?)
- No effective coordination or policy creation (only marginal Water Framework Directive, Flood Directive, Natura 2000, CAP)





Thank  
you!